



Mini Leko 20 is a tiny 20W COB LED profile spot. Die-casting housing, fan-free design. With 19°, 26°, 36°, 50° lens optional, and portable, track mount version selectable. It's an idea product for art gallery, Museum, Shopping mall.

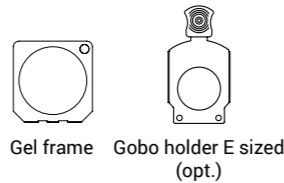
Key features:

- 20W COB LED, high lumen
- 3200K or 5600K color temp
- High CRI of 92
- Die-casting aluminum housing, fan-free
- 19°, 26°, 36°, 50° lens selectable
- Smooth dimming, flicker free
- Compact body, easy to set up
- Track mount version selectable
- Fresnel version selectable

Application:

- Museum
- Theatre, church
- Shopping mall
- Art gallery
- Restaurant

Accessories:



Gel frame Gobo holder E sized (opt.)

MINI LEKO 20

WW / CW

20W LED profile spot

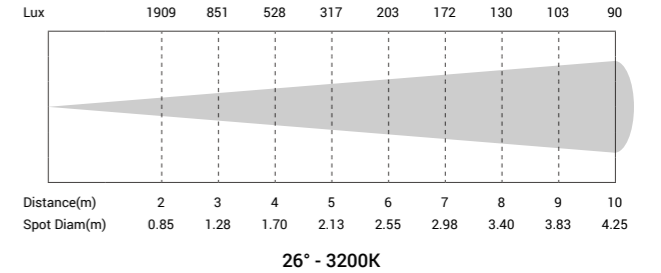
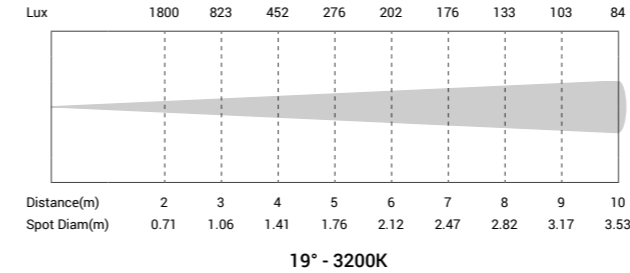


Fresnel version-Piospot 20

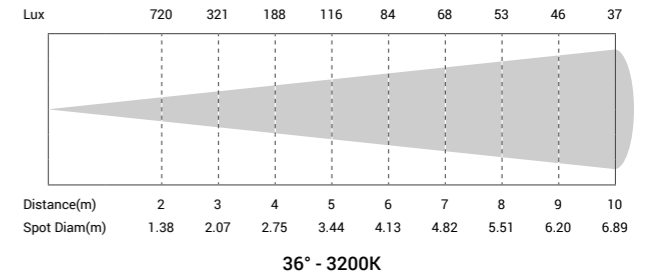
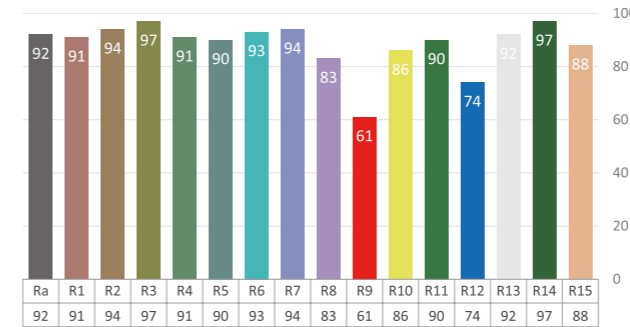


* Track mount version available*

Photometric



Color Rendition



Technical Data

Power supply:	AC100 - 240V, 50/60Hz
Light source:	20W COB LED
Color temperature:	3200K or 5600K
Fixed lens:	19°, 26°, 36°, 50° optional
Color Rendition:	CRI 92
Power connection:	Dedicated power in
Signal connection:	3-pin XLR in & out
Control channels	1/3

Control mode:	DMX, track mount version optional
Housing:	Color black, die-casting aluminum
Size:	343.7 x 133 x 131mm
N.W.:	1.5 kg
Accessories(incl.):	Power cable, gel frame
Accessories(opt.):	Gobo holder E sized, Clamp, Safety rope
Environment:	IP20